



Two Mile Ash
Environmental
Group

www.tmaeg.org



Flood Plain Forest Nature Reserve

A Parks Trust led walk on Sat 11th May 2024: 10.00am - 12.00mid-day



The Parks Trust will be running a 2 hour walk and talk around Floodplain Forest, with a particular focus on wetland birds.

May 11th is [World Migratory Bird Day](#) and we would expect to see birds in three main categories:

Wintering ducks (from late summer to spring) eg teal, wigeon and gadwall, also (less common) shoveler, pintail and goosander,

Breeding waders (from the spring to early summer), e.g redshank and curlew,

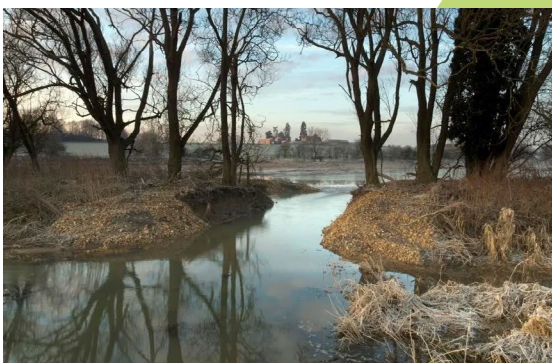
Little egrets and grey heron – fishing all year.

We should have a bird expert with us to answer our questions.



*Great White Egret and Little Egret,
Aug 2016, by Harry Appleyard*

This is a rich time for birds generally – this recently created reserve is very well regarded amongst bird watchers. Beyond that it is an exciting new landscape, a great place for walking that also safeguards our city from flooding.



*Floodplain Forest Nature Reserve
Jan 2015 by James Cairncross*

The [MKPT website](#) displays an excellent map of the footpaths serving the area. We have asked MKPT to couple bird watching from the hides with a walk around the northern parts of the site (close to the main river), a part of the reserve that we didn't see on our last visit. The exact walking route could be affected if we get heavy rain.

*See you
there*

Car sharing may be possible.

**Saturday 11th May 2024
10.00am - 12.00mid-day**

To reserve your place contact:

Pavla Gossop on
01908 561365

or email at:

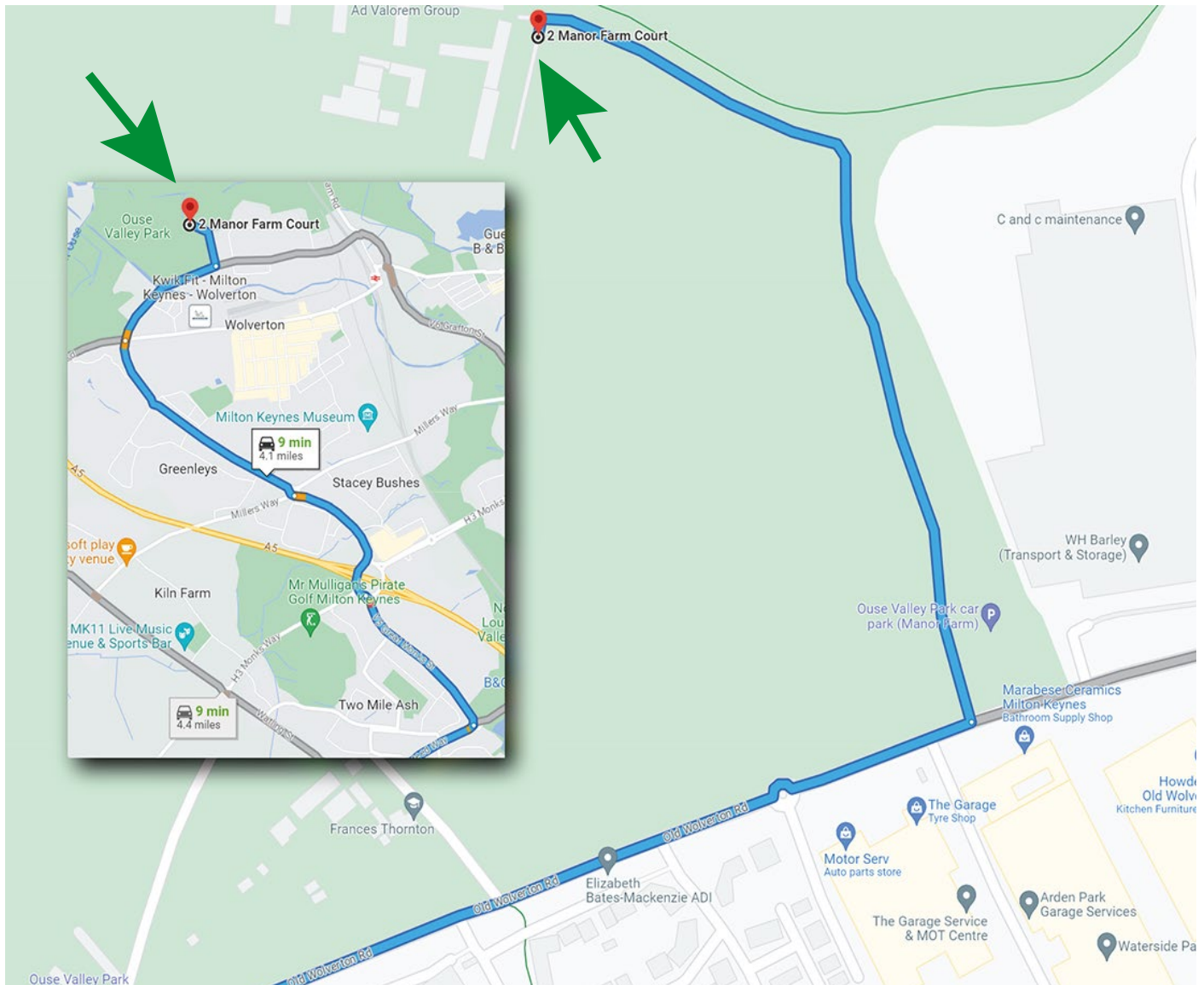
pavlagossop17@outlook.com

The event is free courtesy of TMAEG, but places are limited. You must reserve your place and it will be first come first served.

Floodplain Forest

Walk and Talk

Maps to help you locate the meeting place



Saturday 11th May
10.00am - 12.00mid-day

*a date
for your
diary*

Meeting place: **Free parking** is available at car parks at Manor Farm Court, MK12 5NN (off Old Wolverton Road).

Please proceed to the second, larger car park which is by the main buildings (marked on the map above).

Dress and Weather: We will be sticking to the main paths, but please wear sensible walking shoes and dress for the weather.

Walk duration: The walk will last around 2 hours.

Timing: Please arrive in time for the walk to begin at 10am sharp.

Accessibility: There is a good path network around the lakes, with one or two steepish sections. There is a possibility of some flooding. There are no toilets on site. Please see the Parks Trust website (below) for more details.

To find out more about the site of our walk and talk, visit the Parks Trust website [here](#):