

Summer 2020 Newsletter



Virtual Open Gardens 2020 Gallery

We are delighted to announce that our Virtual Open Gardens 2020 Gallery is up and running on the TMAEG website. Chris Monk has done an excellent job creating a fascinating tour of eight gardens, that can be accessed in any order.

Try it yourself: [Open Gardens Gallery 2020](#)



Suzanne and Brian's garden

We hope that the Gallery will be a lasting reminder of the beauty and creativity on our own doorstep. Maybe it will encourage you to think about offering your own garden for Open Gardens 2022?

A heartfelt thank you to the Gardeners and to all who have made this possible.

Breakthrough for the Bluebell Circuit – Full Planning Permission.

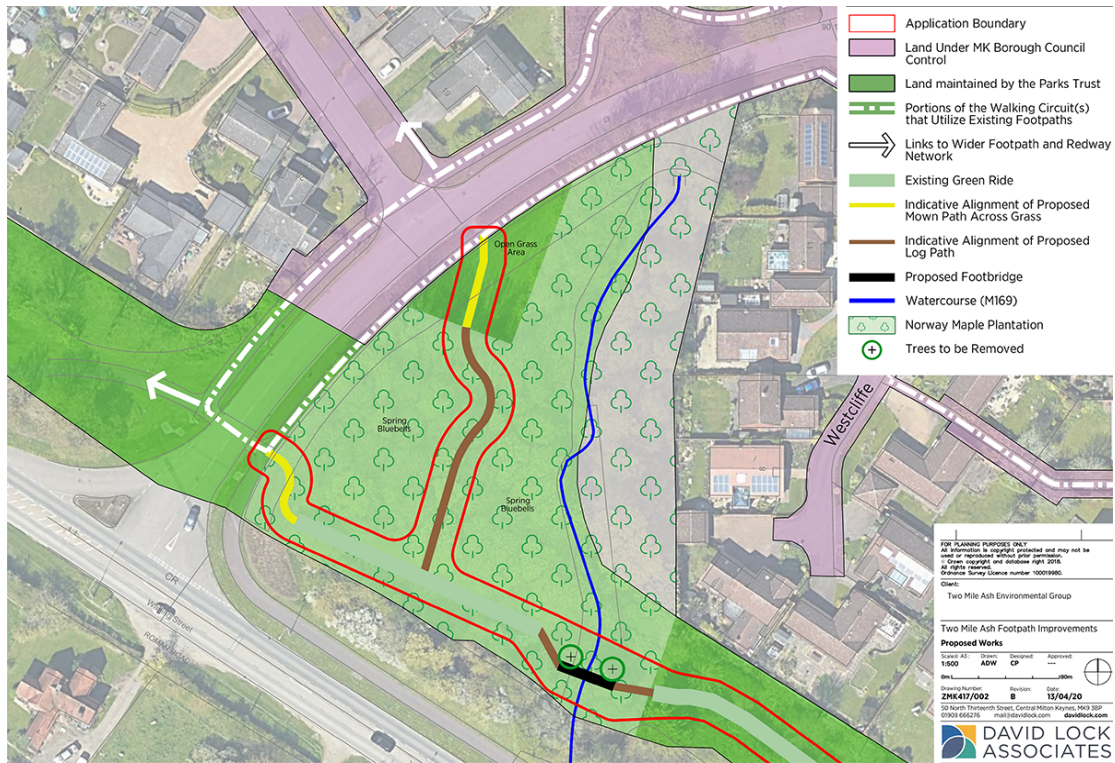
Milton Keynes Council has granted planning permission for the footbridge and paths needed to create our half mile walking circuit. This will be a major asset for Two Mile Ash, providing access to Parks Trust land, enhanced opportunities for enjoying nature and broadening the range of local walks available to us all.

We are grateful to the Trust for their support, to David Lock Associates who have helped us with the application and to those members of TMAEG who, in their various ways, have put in their time and energy.



Stan and Brian marking out the foundations for the bridge footings

We are now in Stage 2 of the project which involves gaining consent from the drainage board (who have already approved the design of the bridge) and the discharge of three other detailed conditions attached to the planning permission. Those conditions include further consideration of several 'close by' trees, to ensure that any harm to them is minimised; we will also be discussing some appropriate new planting with the Parks Trust. Beyond these practical matters we have begun the search for funding (Stage 3). These are uncertain times but the process should be eased once all the permissions are through. With that full planning permission secured the momentum is now with us.



'Proposed Works' – this particular plan shows the main application area – the Circuit also includes a lengthy section of Green Ride and an existing woodland footpath on land between Milesmere and Thorncliffe.

Smaller Projects

Following the strict restrictions on social gatherings brought in because of Covid 19, TMAEG halted its events programme in the middle of March. We have resumed it since May but on a reduced two person team basis compatible with the Government's regulations. We hope to move back to bigger working groups by September but this will depend on the prevailing advice.



Mo and Chris overhauling the Fern Garden



Other bedding plants prepared by Anne, planted in Park Gateway planters by Stan and Marise.



Bedding plants prepared for the Ashbrook School site by Pavla, having been nurtured from plug plant stage by Anne.

Our photos show some of the projects conducted during the last couple of months.

Annual General Meeting

Covid-19 restrictions make it currently impossible to set a date for our AGM, normally held in mid-September.

We shall keep TMAEG Members informed about how we can keep our obligations to them.